

Leadership in
Fostering Creativity
and Adapting to
Transformative
Change

DRIVING CHANGE AND INNOVATION



THE IMPORTANCE OF CHANGE AND INNOVATION IN STEM



- Rapid advancements in STEM require adaptability and forward-thinking.



- Innovation drives progress, competitiveness, and new solutions.



- Leaders must embrace change to create lasting impact and growth.

WHAT IT MEANS TO LEAD INNOVATION



- Leading innovation involves inspiring new ideas and challenging norms.



- Leaders create a vision that encourages experimentation and risk-taking.



- They empower teams to explore creative solutions and embrace curiosity.



FOSTERING AN INNOVATIVE ENVIRONMENT

01

- Establish a clear vision that aligns with organisational goals.

02

- Encourage continuous learning and open-mindedness.

03

- Support teams with resources, time, and a safe space to experiment.



ENCOURAGING
EXPERIMENTATION
AND CREATIVITY

- Experimentation allows teams to test new ideas and learn from failure.

- Creativity workshops, brainstorming sessions, and collaboration fuel innovation.

- Recognise and reward innovative thinking to motivate ongoing creativity.

BUILDING A CULTURE OF CURIOSITY

- - Curiosity encourages exploration and the pursuit of new knowledge.
- - Leaders should model curiosity by asking questions and exploring new ideas.
- - Encourage teams to stay informed on industry trends and emerging tech.



CHANGE MANAGEMENT ESSENTIALS



- CHANGE MANAGEMENT
ENSURES SMOOTH
TRANSITIONS AND MITIGATES
RESISTANCE.



- KEY STEPS: ASSESS THE NEED
FOR CHANGE, CREATE A
PLAN, AND COMMUNICATE
EFFECTIVELY.



- SUPPORTING TEAMS DURING
TRANSITIONS BUILDS
RESILIENCE AND
ADAPTABILITY.

STAGES OF THE CHANGE PROCESS

- Planning: Define goals, risks, and resources for the change.



- Implementation: Execute change with clear instructions and support.



- Reinforcement: Evaluate the change and celebrate successes to ensure sustainability.

ADDRESSING RESISTANCE TO CHANGE

- Resistance is natural and can be addressed through empathy and transparency.



- Leaders should communicate the benefits and necessity of change.



- Involve team members in the process to increase buy-in and cooperation.

FOSTERING A CREATIVE AND INNOVATIVE CULTURE



- Creativity and innovation require a supportive culture.

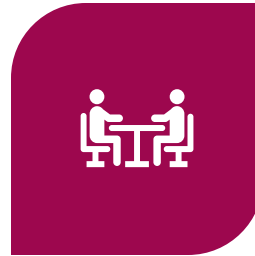


- Encourage cross-functional collaboration and knowledge-sharing.



- Recognise and reward contributions to maintain a motivated, engaged team.

RECOGNISING AND REWARDING INNOVATION



- RECOGNISING INNOVATIVE EFFORTS REINFORCES A POSITIVE CULTURE.

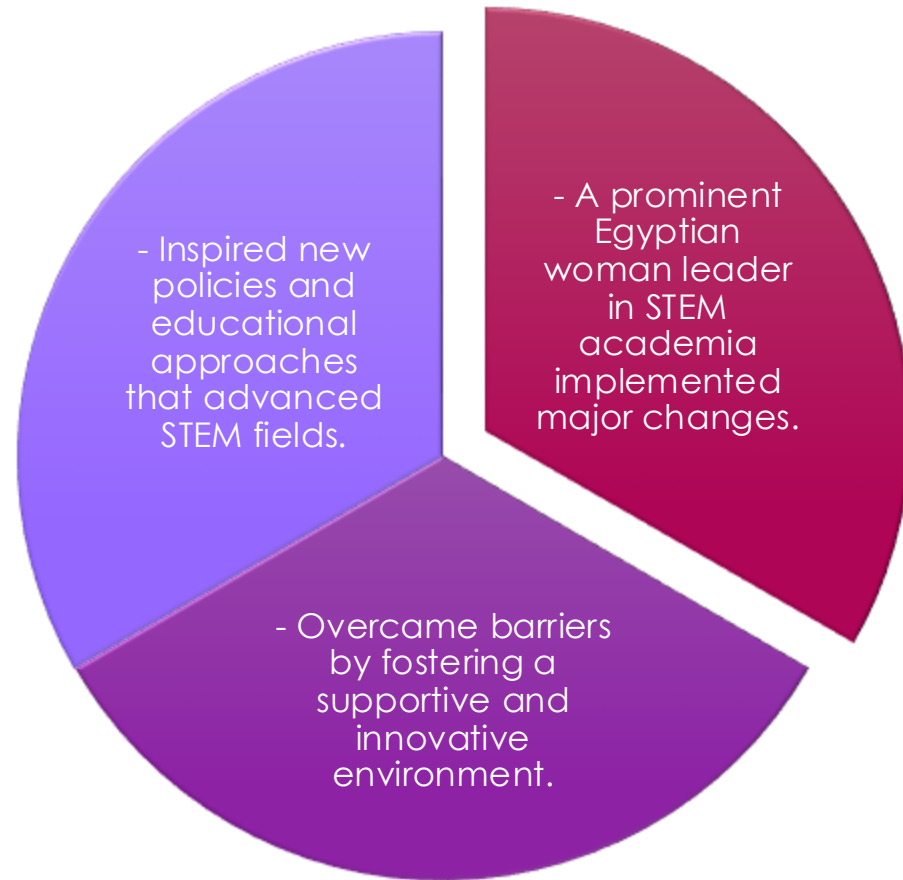


- REWARDS CAN BE FORMAL (BONUSES, AWARDS) OR INFORMAL (PRAISE, ACKNOWLEDGMENT).



- INCLUSIVE RECOGNITION PRACTICES BOOST MORALE AND ENCOURAGE ONGOING CREATIVITY.

CASE STUDY: LEADING CHANGE IN STEM ACADEMIA



LESSONS FROM THE CASE STUDY



- Visionary leadership inspires change, even amidst challenges.

- Leaders play a crucial role in shaping organisational culture towards innovation.

- Support and recognition drive team motivation and resilience.



ACTIVITY:
DEVELOPING
AN
INNOVATION
INITIATIVE

- Participants design an innovation initiative relevant to their organisation.

- Outline objectives, necessary resources, and implementation steps.

Outcome: A practical plan to drive innovation in their respective fields.



TOOLS FOR MANAGING CHANGE

- Change Management Models: ADKAR, Kotter's 8-Step Process.

- Templates for tracking progress and ensuring accountability.

- Communication guides to facilitate clarity and openness during change.



RESOURCES
FOR
INNOVATION
AND
CHANGE
LEADERSHIP

- Books: 'The Innovator's DNA' by Jeff Dyer,
'Leading Change' by
John Kotter.

- Articles: Harvard
Business Review on
fostering innovation and
managing change.

- Tools: Creativity
assessment guides,
change management
templates.

ADDITIONAL SUPPORT AND LEARNING OPPORTUNITIES



- ONLINE COURSES:
INNOVATION AND CHANGE
LEADERSHIP ON COURSERA.



- INNOVATION NETWORKS:
CONNECT WITH INDUSTRY
EXPERTS AND THOUGHT
LEADERS.



- INDUSTRY EVENTS: ATTEND
WORKSHOPS AND
CONFERENCES ON
INNOVATION IN STEM.

KEY TAKEAWAYS



- DRIVING CHANGE AND INNOVATION REQUIRES ADAPTABILITY, CURIOSITY, AND RESILIENCE.



- LEADERS SET THE TONE FOR A CULTURE OF CREATIVITY AND FORWARD-THINKING.



- EMBRACING CHANGE FOSTERS LONG-TERM SUCCESS AND COMPETITIVE ADVANTAGE.

INSPIRATIONAL QUOTE

- "The only way to make sense out of change is to plunge into it, move with it, and join the dance." - Alan Watts
- Leaders who embrace change drive progress and inspire others to innovate.

